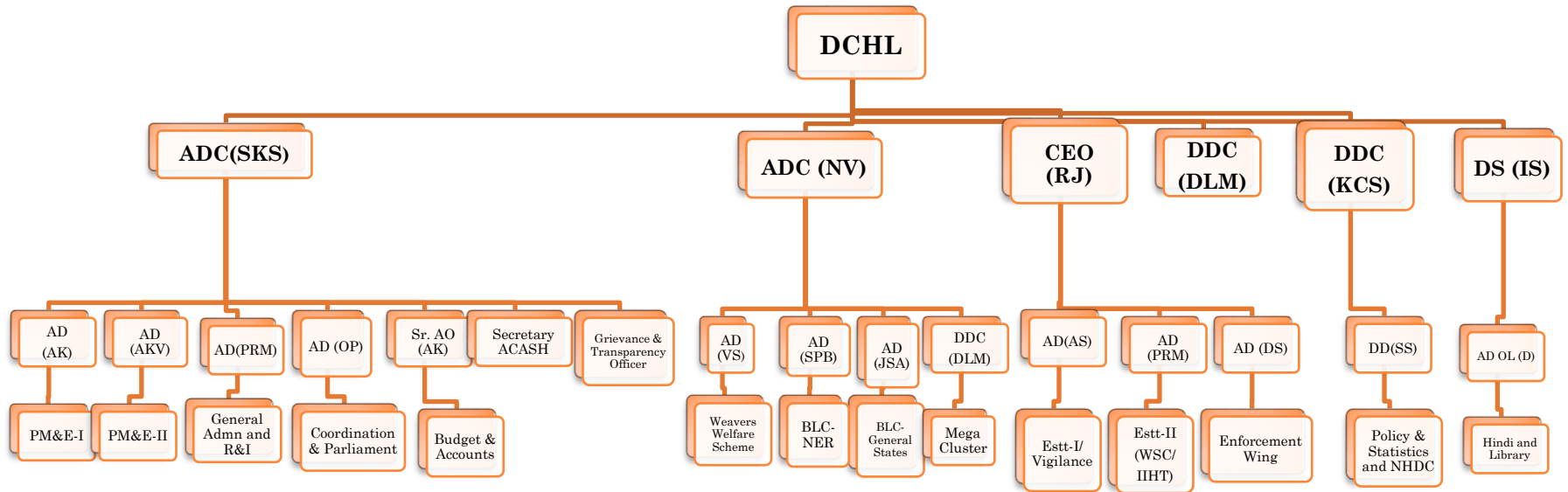


Organisation Chart of office of the Development Commissioner for Handlooms



DCHL- Development Commissioner for Handlooms (Shri Sanjay Rastogi)

ADC- Additional Development Commissioner for Handlooms

SKS- Shri Santosh Kumar Singh

NV – Shri Nikhil Varma

CEO(RJ) – Chief Enforcement Officer (Shri Rajiv Jain)

DS(IS) – Deputy Secretary (Shri Inderjeet Sethi)

DDC – Deputy Development Commissioner

KCS – Shri K C Shakdwipee

DLM- Shri Devi Lal Meena

DD (SS)- Deputy Director (Shri Siddharth Singh)

Sr. AO (AK)- Senior Accounts Officer (Shri Ashok Kumar)

AD–OL (D) – Assistant Director –Official Language (Shri Sanjay Kumar)

AD- Assistant Director

AS- Smt. Anita Sawhney, PRM-Shri Pappu Ram Meena, OP-Shri Om Prakash, SPB- Shri Surender Prasad Bhatt, JSA-Shri Jasbeer Singh Arora, VS- Smt. Visalakshi Sivanandan AK- Shri Alok Kumar, AKV- Shri Ashok Kumar Verma, DS- Shri Davinder Sharma.